



## For Immediate Release

Forrest & Associates  
818-508-0281/ 818-693-0964

**THE PHANTOM'S LEADING LADIES STARRING TERI BIBB, KAREN  
CULLIVER, MARY D'ARCY AT EL PORTAL THEATRE  
MAY 12 AND 13<sup>TH</sup>  
FOR A SPECIAL MOTHER'S DAY CONCERT**

A glamorous trio of Broadway stars Teri Bibb, Karen Culliver and Mary D'Arcy all who you may have seen as Christine Daae on Broadway in *The Phantom of the Opera* will appear for two performances only, May 12 at 8 pm and May 13 at 2 pm (Mothers Day Weekend) at the historic El Portal Theatre Mainstage 5269 Lankershim Blvd. in North Hollywood.

This special Mother's Day Weekend Concert will be a mix from Broadway show classics to the Beatles as solo artists and in distinctive three part harmony. The talented Bibb, Culliver and D'Arcy provide a concert of surprises and flirtatious fun with exquisite musicianship, humor and class; think "The Three Tenors", but cooler and funnier in their cocktail dresses. Collectively the Christines' have starred in over 4,000 performances in *The Phantom of the Opera* as well as the leading roles in 9 additional Broadway hits.

If your Mom is a musical theatre fan, this is the ultimate Mother's Day present. "Pure, elegant fun!" The Phantom's Leading Ladies have toured the United States playing Carnegie Hall, Radio City Music Hall, London's Royal Albert Hall and the Library of Congress.

For tickets and information please call 818-508-0281 or on line at [www.elportaltheatre.com](http://www.elportaltheatre.com).

### CALENDAR

The Phantom's Leading Ladies  
Starring Teri Bibb, Karen Culliver, Mary D'Arcy

Produced by Weddington Street Productions

Saturday, May 12 at 8 pm  
Sunday, May 13 at 2 pm (Mother's Day)

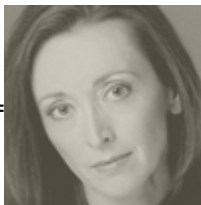
El Portal Theatre  
5269 Lankershim Blvd.  
North Hollywood, California

For tickets and information call:  
818-508-4200/ 1-866-811-4111  
[www.elportaltheatre.com](http://www.elportaltheatre.com)

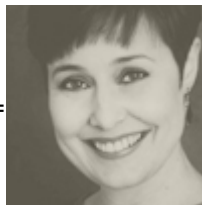
Forrest & Associates  
Pegge Forrest - Jay Irwin - Lisa Bianconi  
Phone 818-693-0964/508-0281/760-0964  
Fax 818-508-9698  
[RNFRST@aol.com](mailto:RNFRST@aol.com)

---

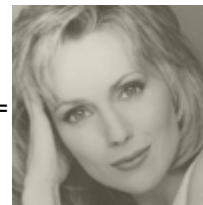
**THE PHANTOM'S LEADING LADIES**



Teri  
Bibb



Karen  
Culliver



Mary  
D'Arcy

---

**Teri Bibb** played Christine Daaé in THE PHANTOM OF THE OPERA on Broadway and with the national tour, during which she sang for both former President Clinton and for former President Bush at a command performance at the White House, and earned a Helen Hayes Award nomination and a Carbonell Award. Also on Broadway: Amalia in SHE LOVES ME (stand by). Regionally, she starred in the world premiere of SONGS FROM THE TALL GRASS at the Ford's Theatre. Ms. Bibb has been a featured soloist in tributes honoring Lord Andrew Lloyd Webber, Stephen Sondheim, and Harold Prince, including "The Broadway Prince" at Carnegie Hall and six annual "The Night of 1,000 Voices" at London's Royal Albert Hall. She sang duets with tenor José Carreras at Radio City Music Hall and was featured in "One Enchanted Evening" at Belfast's Odyssey Arena. She can be heard on three recordings: "Unsung Irving Berlin," "Sondheim Tonight" and "A Gala Concert for Hal Prince." She has guest starred on TV, been a supporting player on film, and has sung on several film scores, including "Ice Age" and "Polar Express."

---

**Karen Culliver** played Christine Daaé in THE PHANTOM OF THE OPERA, Rosa Bud in THE MYSTERY OF EDWIN DROOD, Lucille Ballard in MEET ME IN ST. LOUIS and Kim Ravenal in SHOW BOAT on Broadway. Off-Broadway Karen was Luisa in THE FANTASTICKS (filmed for Lincoln Center). Touring credits include Christine in PHANTOM, appearing in Chicago, Los Angeles and San Francisco. In California, she has been seen as Lina Lamont in SINGIN' IN THE RAIN, Grace in ANNIE, Rosabella in THE MOST HAPPY FELLA, Magnolia in SHOW BOAT, Lily in THE SECRET GARDEN, Adriana in THE BOYS FROM SYRACUSE (starring David Hyde Pierce), and Christine in Yeston/Kopit's PHANTOM. Various national theatres have seen her as Marian in THE MUSIC MAN, Carlotta in THE SWEET REVENGE OF LUISA MAY (nominated for the Helen Hayes Award), Eliza in MY FAIR LADY and Fiona in BRIGADOON. Recordings include "Christmas Center Stage" and "The Portrait," Yamaha's disclavier CDs of "Broadway Love Songs" and "Songs from THE PHANTOM OF THE OPERA," and of course, "The Leading Ladies."

---

**Mary D'Arcy** has starred as Christine Daaé opposite both Michael Crawford and Colm Wilkinson in Lord Andrew Lloyd Webber's THE PHANTOM OF THE OPERA in Los Angeles, Toronto, and on Broadway. Ms. D'Arcy also starred on Broadway as Kathy Selden in SINGIN' IN THE RAIN and originated the roles of Celeste II / Elaine in SUNDAY IN THE PARK WITH GEORGE, and Cinderella in the Playwright's Horizon workshop of INTO THE WOODS, both written by Stephen Sondheim and James Lapine. She has toured the former Soviet Union in Duke Ellington's SOPHISTICATED LADIES and the United States as the late Richard Harris' favorite Guenevere in CAMELOT. Ms. D'Arcy can be seen opposite James Woods and Drew Barrymore in Steven King's cult classic film "Cat's Eye." She is very proud to her work on "Sondheim," a recorded tribute to the composer on which she premiered the vocal rendition of "Goodbye For Now" (the theme from Warren Beatty's "Reds"), as well as "Take Me to the World" from EVENING PRIMROSE. Each December Mary produces her own Christmas concert called "Mary's Christmas" supporting local charities.